



MONTHLY MEMBERSHIP PROGRESS REPORT

District 325B1

Results as of: 3/31/2015

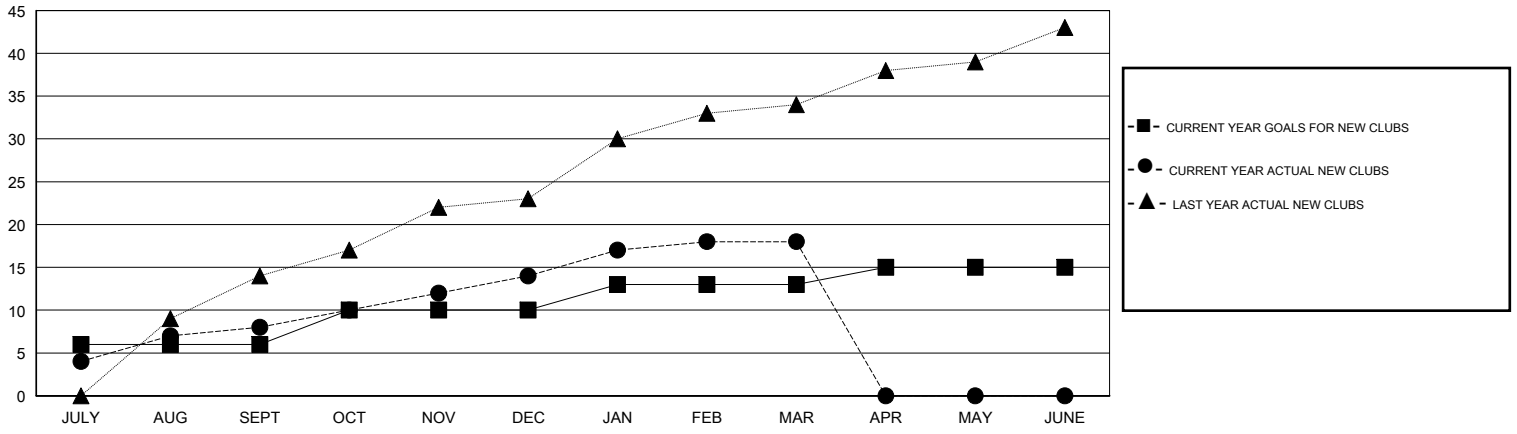
GMT: NAZMUL HAQUE

LOCATION NEPAL

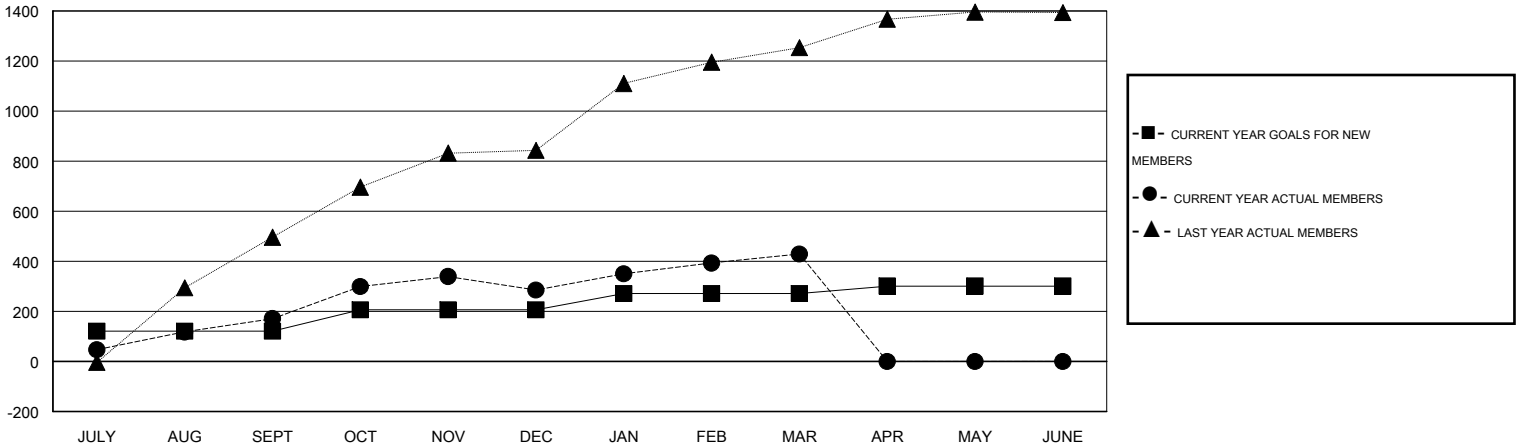
GMT CA 6

Clubs					Members				
RESULTS FOR 2014-2015					RESULTS FOR 2014-2015				
QUARTER	NEW CLUB GOAL	NEW CLUBS	DROPPED CLUBS	NET GAIN/LOSS	QUARTER	NEW MEMBER GOAL	CHARTER AND NEW MEMBERS ADDED	DROPPED MEMBERS	NET GAIN/LOSS
JULY/AUG/SEPT	6	8	0	8	JULY/AUG/SEPT	121	301	130	171
OCT/NOV/DEC	4	6	2	4	OCT/NOV/DEC	85	323	209	114
JAN/FEB/MAR	3	4	3	1	JAN/FEB/MAR	65	263	119	144
APR/MAY/JUNE	2	0	0	0	APR/MAY/JUNE	30	0	0	0

GOALS AND ACTUAL NEW CLUBS CUMULATIVE



GOALS AND ACTUAL MEMBERS CUMULATIVE



DROPPED CLUBS: 5	104 CLUBS OF 169 ADDED 1 OR MORE NEW MEMBERS	<u>GENDER DISTRIBUTION</u>	
<u>DROPPED MEMBERS</u>		MALE	4,050 (82.50%)
DECEASED	1	FEMALE	859 (17.50%)
CLUB CANCELLED	80	CLICK HERE FOR HEALTH ASSESSMENT DATA	
OTHER	377	FAMILY UNIT MEMBERS	2,480
TOTAL	458	HEAD OF HOUSEHOLD	915
		NON-HEAD OF HOUSEHOLD	1,565